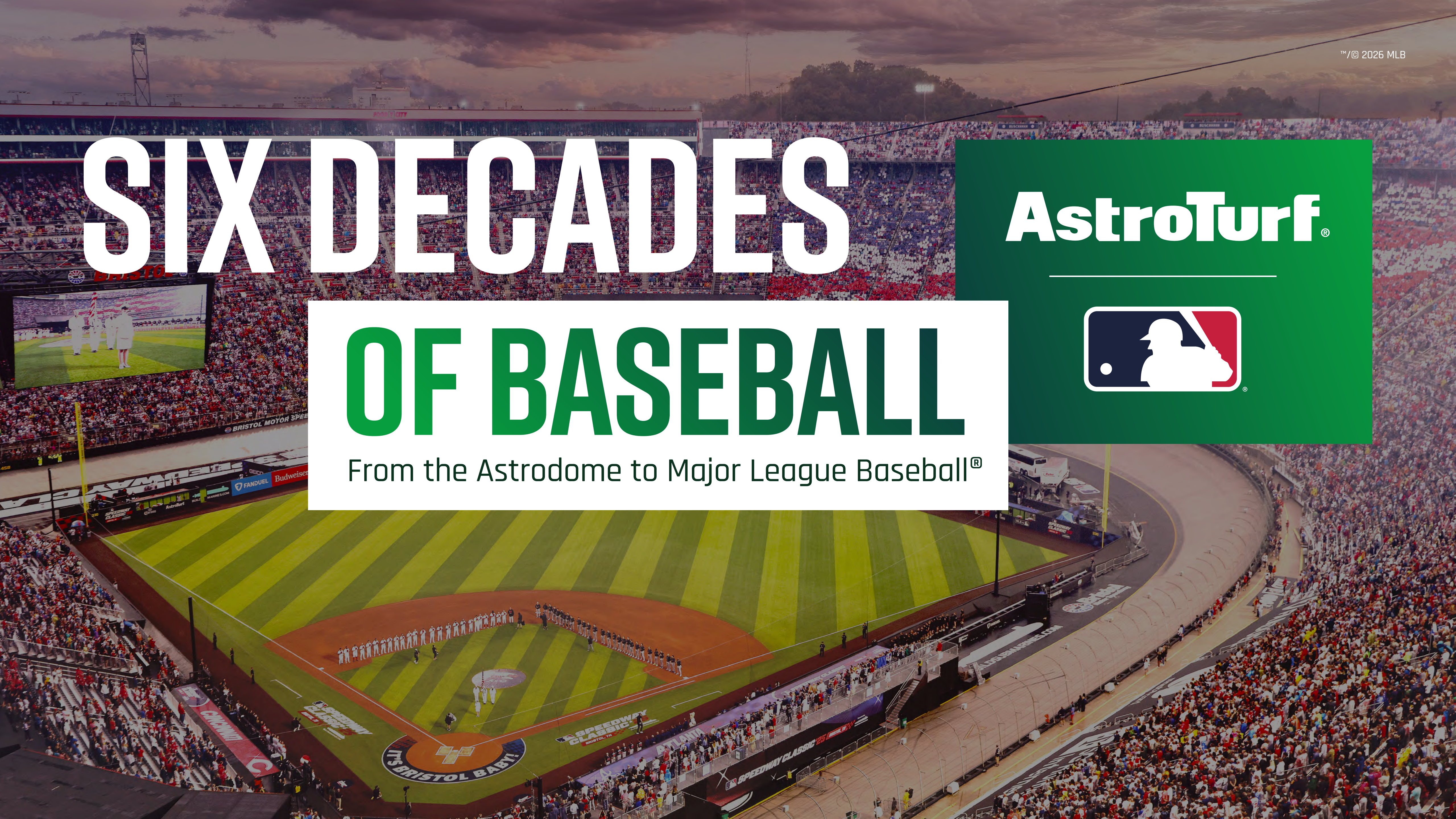


SIX DECADES OF BASEBALL

From the Astrodome to Major League Baseball®

AstroTurf®



TRUSTED & CHOSEN

BY MAJOR LEAGUE BASEBALL

AstroTurf is the
Official Synthetic Turf of
Major League Baseball®

This multi-year partnership recognizes AstroTurf's presence at the highest level of the game and reflects the brand's long-standing reputation as a surface trusted and chosen by Major League Baseball and elite baseball programs across the country. AstroTurf's relentless focus on innovation and performance make us the go-to choice for athletes and coaches seeking surfaces engineered for excellence from professional stadiums and training centers, to college diamonds and community ballfields.

"To be the Official Synthetic Turf of Major League Baseball is an extraordinary opportunity and a reflection of the trust MLB places in our Diamond Series."

- Aaron Klotz, Director of Baseball, AstroTurf

AstroTurf





SINCE 1965.



THE ICON THAT INVENTED THE INDUSTRY

In 1965, baseball witnessed a revolutionary moment when the Houston Astrodome, the world's first domed stadium, introduced synthetic turf to the sport. The surface was AstroTurf, and the moment marked the beginning of a partnership between baseball and AstroTurf that would stretch over the next six decades.

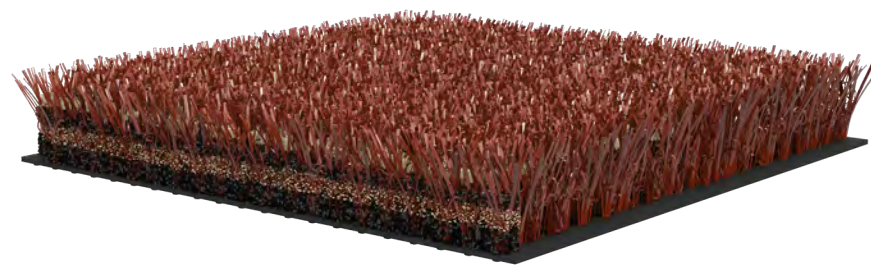
AstroTurf is the surface for some of the most historic moments in the sport, beginning with the first MLB game on synthetic turf between the Houston Astros and the Los Angeles Dodgers on March 21, 1966 and extending over 12 World Series and 8 Major League All-Star Games.

Since that first installation, AstroTurf has been an integral part of America's baseball story. As the game evolved, so did the surface beneath it.

In 2008, AstroTurf became the first company to develop a sport-specific turf system for baseball with the creation of the Diamond Series, a groundbreaking technological advancement tailored to the unique demands of the diamond.

The AstroTurf Diamond Series achieves the most natural playability of all synthetic turf and marked a pivotal shift from generic turf to baseball-engineered systems.

DIAMOND SERIES SYSTEMS



DIAMOND SERIES | VARSITY

All Clay: Rhino SF 42, 2-inch

All Grass: Rhino Blend 42, 2-inch

DIAMOND SERIES | COLLEGIATE

Infield Clay: RootZone Diamond I 52, 1.5-inch

All Grass: RootZone Diamond Blend 52, 2-inch

Warning Track: RootZone Diamond I 52, 1.5-inch

Mound and Plate: RootZone Diamond ERA 90, 1.5-inch (replacement panels included)

DIAMOND SERIES | PROFESSIONAL

Infield Clay: RootZone Diamond I 60, 1.5-inch

All Grass: RootZone Diamond Blend 60, 2-inch

Warning Track: RootZone Diamond I 60, 1.5-inch

Mound and Plate: RootZone Diamond ERA 90, 1.5-inch (replacement panels included)

DIAMOND SERIES | COLLEGIATE LEGEND

Infield Clay: RootZone Diamond I 52, 1.5-inch

Infield Grass: RootZone Diamond Blend 52, 2-inch

Foul Territory and Outfield Grass: Rhino Blend 42, 2-inch

Warning Track: Rhino Blend 42, 1.5-inch or 2-inch

Mound and Plate: RootZone Diamond ERA 90, 1.5-inch (replacement panels included)

DIAMOND SERIES | PROFESSIONAL LEGEND

Infield Clay: RootZone Diamond I 60, 1.5-inch

Infield Grass: RootZone Diamond Blend 60, 2-inch

Foul Territory and Outfield Grass: Rhino Blend 42, 2-inch

Warning Track: Rhino Blend 42, 2-inch or 1.5-inch
RootZone Diamond I 52, 1.5-inch

Mound and Plate: RootZone Diamond ERA 90, 1.5-inch (replacement panels included)

INTRODUCING THE

DIAMOND SERIES

The Official Synthetic Turf Partner of Major League Baseball®

AstroTurf's Diamond Series achieves the most natural playability of all synthetic turf systems by tailoring a range of unique products to each area of the field, giving coaches control of their field and budgets.

TURF POWERED BY SCIENCE

AstroTurf and baseball's relationship is rooted in science. No other synthetic turf company has invested more resources into research and development. For over 12 years, the

company has maintained a partnership with the University of Tennessee's Department of Turf Sciences.

AstroTurf's pioneering Diamond Series technology mimics clay in the base paths and grass in the outfield. The use of nylon for realistic sliding distances and added durability, as well as specialized fibers, varied pile heights, and adjustable infill ratios make a significant difference for athlete welfare and optimal ball bounce.

BUILT FOR PERFORMANCE. TAILOR-MADE FOR EVERY LEVEL OF THE GAME.

We provide metrics, testing data, and research to our clients and then spend hours consulting with the coaches to determine exactly how they desire their field to play. Our tailored approach helps us fine tune each field's speed and bounces to give our customers the desired playability and performance of their Diamond Series field. Our AstroTurf Baseball team of professionals keep the owner involved in the process from start to finish to truly ensure that they receive the homefield advantage

"...Through controlled testing and applied turfgrass science, we've engineered systems that deliver consistent ball response, extended durability, and enhanced athlete safety. This isn't just synthetic turf, it's science in motion."

- Dr. John Sorochan, University of Tennessee



SYNTHETIC TURF

MAKES BASEBALL BETTER

Synthetic turf has become the preferred playing surface for baseball programs nationwide - from Major League ballparks to high school diamonds.

Why? Because it delivers reliable, safe, and consistent performance and durability that natural grass simply can't match. With fewer rainouts, lower maintenance demands, and customization of the field, bunts, slaps, and bounces play like they should.

Natural grass fields are vulnerable to wear and tear from weather, often needing downtime for repairs. In contrast, advanced drainage systems mean synthetic turf fields recover quickly after storms. That means less impact from rainouts, less disruption to practice or game schedules, and more opportunities to play.

The durability of artificial turf also makes it ideal for high-traffic and frequent usage.

Artificial turf removes many of the expenses tied to natural grass. No mowing, watering, or fertilizing. Over time, the cost savings from reduced maintenance make artificial turf a wise investment, especially for schools or organizations with tight budgets.

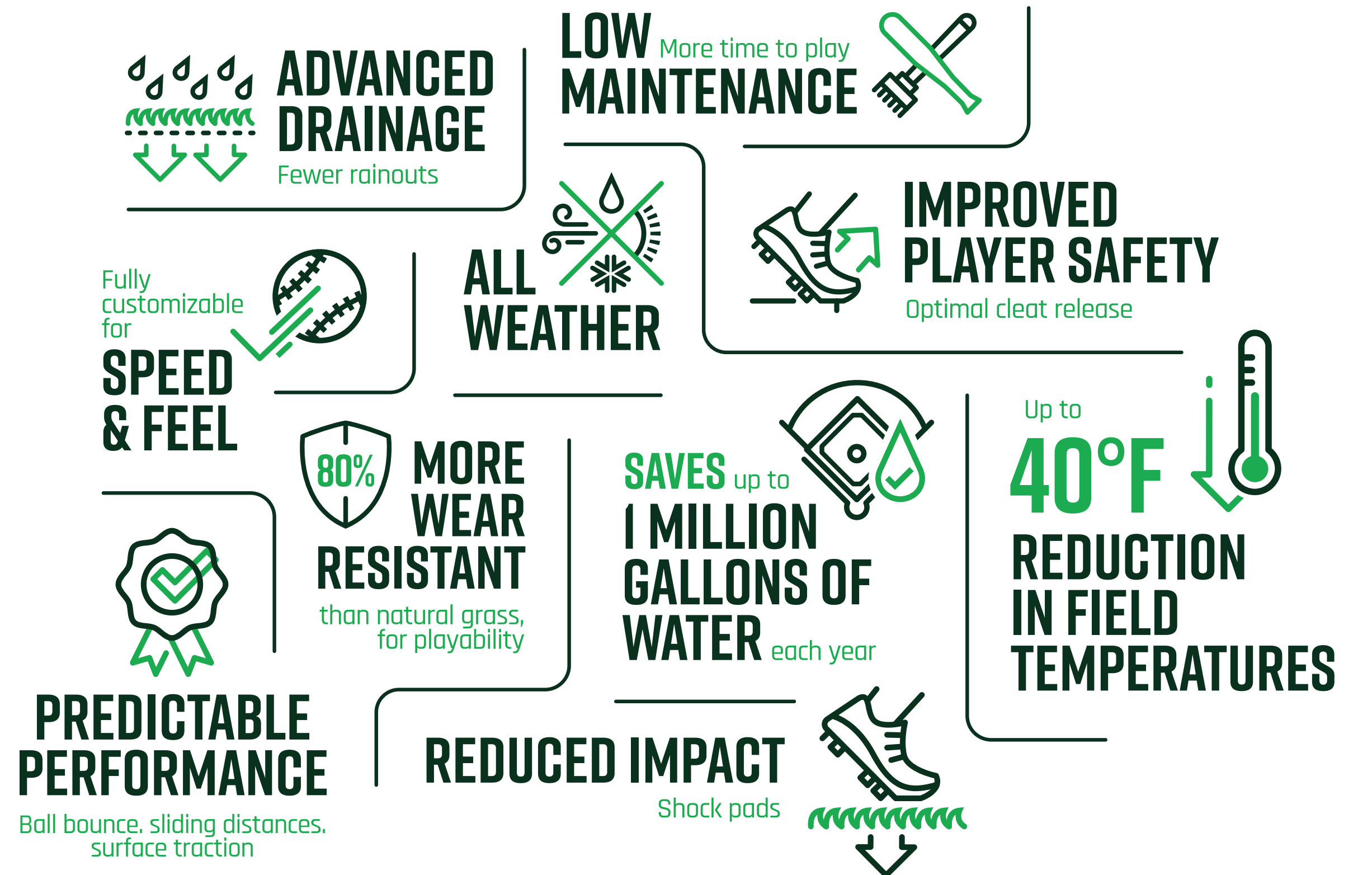
Every inch of a synthetic field is engineered for safety and consistency. Player safety is a top priority, and synthetic turf fields deliver consistent, impact-absorbing surfaces that help

minimize injuries. Integrated shock-absorption layers help reduce impact forces, limiting the risk of joint injuries and surface-related sprains.

One of the biggest advantages of synthetic turf is customization. You don't just get a field, you get a performance system built to suit your team's unique style. Want a

faster infield and a slower outfield? No problem. Synthetic turf systems can be tuned through custom infill ratios, specialized fibers and pile heights, and surface speed adjustments.

AstroTurf engineers your field with the resilience and safety your athletes deserve.

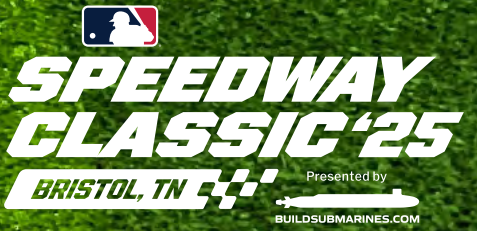




WE DO

BIG THINGS

AstroTurf®



From Racetrack to Major League Baseball Field in 10 days.

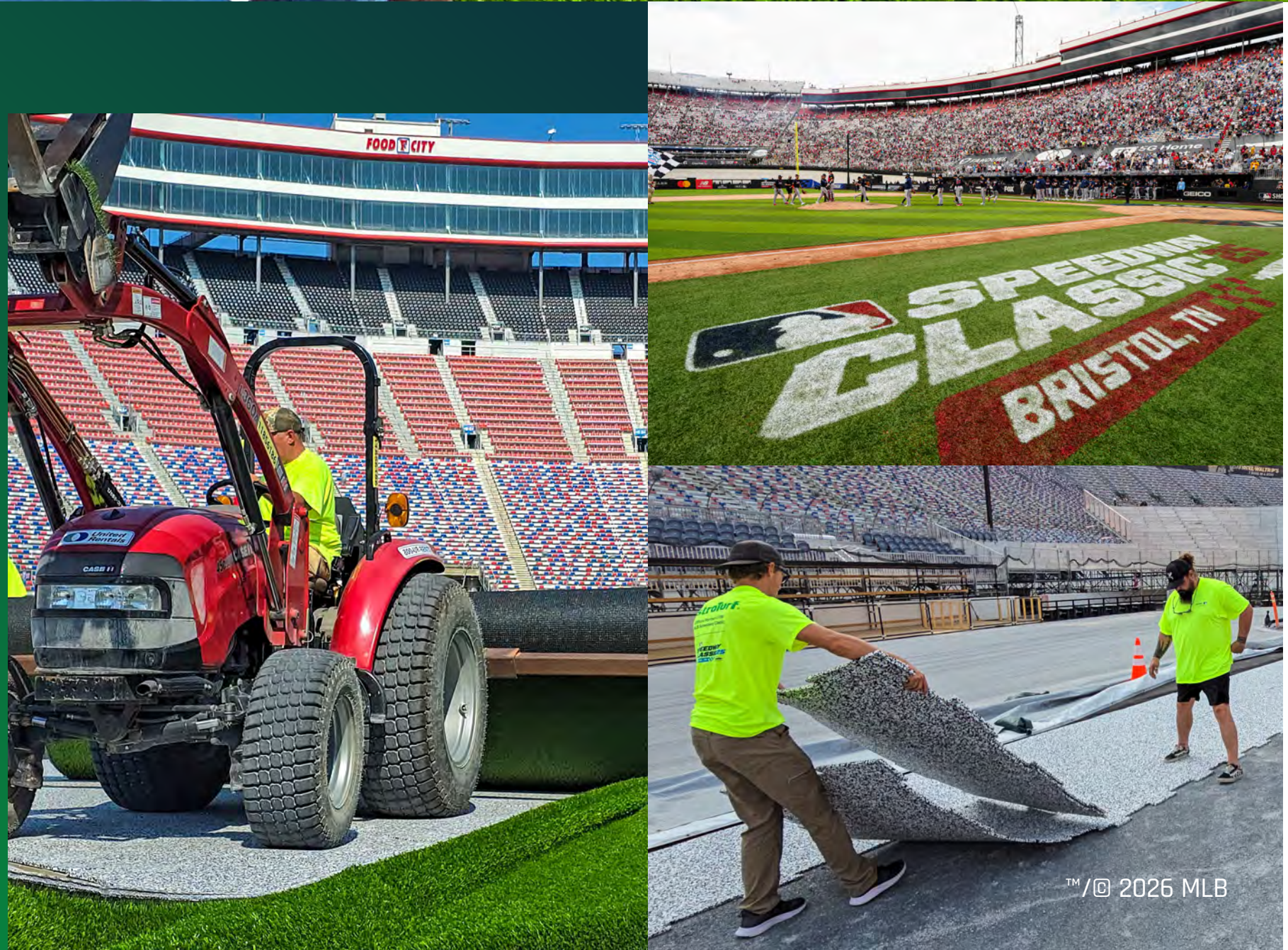
A TURF TRANSFORMATION LIKE NO OTHER

The 2025 MLB Speedway Classic, where Bristol Motor Speedway – the “Last Great Colosseum” of NASCAR – was transformed into a baseball diamond to welcome the Atlanta Braves and Cincinnati Reds. It marked the first ever MLB game played in Tennessee. With a record-breaking crowd of 91,032 fans filling the stands and millions watching on national broadcast, the event proved that baseball can break boundaries, both in scale and imagination.

THE ASTROTURF SOLUTION

AstroTurf’s team of engineers and installers partnered with MLB and Bristol Motor Speedway to design and deliver a temporary yet professional ballfield.

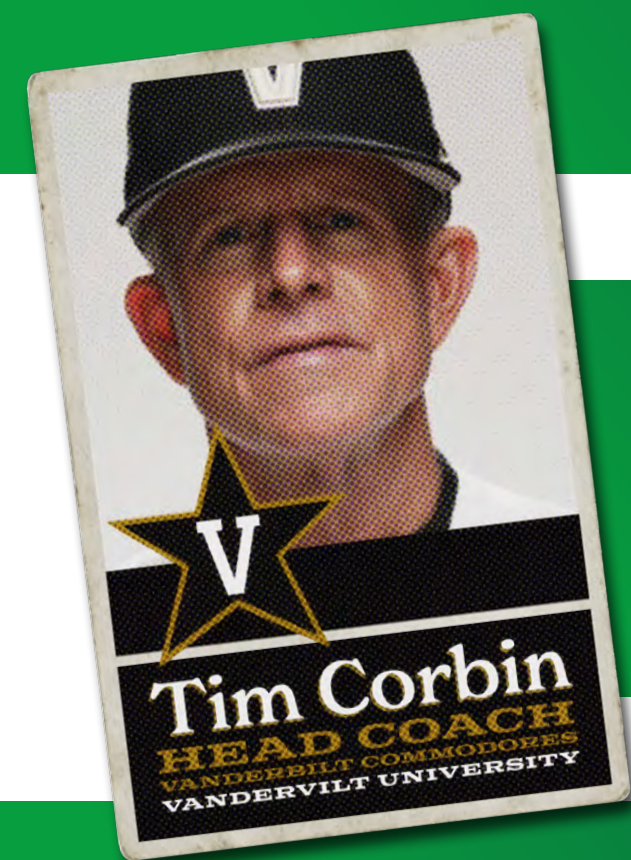
- Installed AstroTurf Diamond Series turf system, designed specifically for baseball’s unique needs and true ball bounce.
- Installation volume: 87,000 sq. ft. of outfield, 6,544 sq. ft of the infield, and an additional 22,628 sq. ft for the warning track.
- Engineered to be temporary yet uncompromising, the system was dismantled after the event without damaging the Speedway infrastructure.



BASEBALL'S BEST

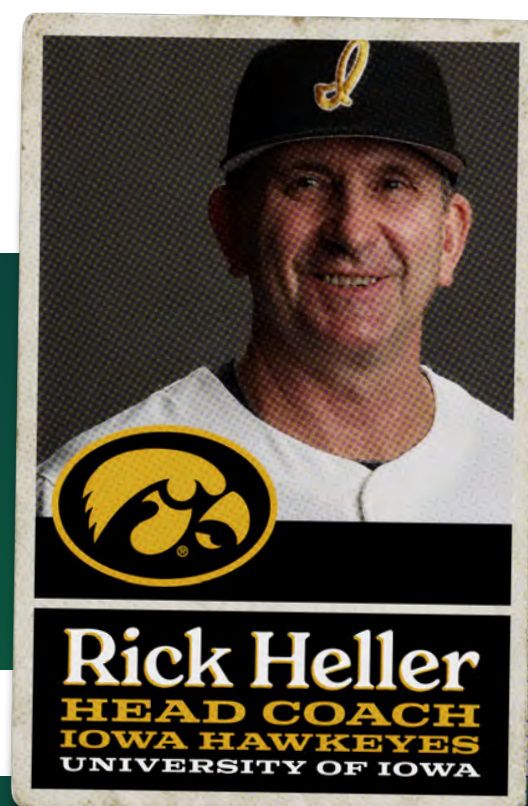
"Nobody speaks louder than coaches when it comes to AstroTurf® Diamond Series systems. Hear what some of the best in the game have to say about playing on their Diamond Series fields."

"AstroTurf did a fantastic job with the install of our new turf. Everyone involved with the project was great to work with from start to finish. The new turf has played great from day one and will only get better. We have been on it everyday for a month and our players love it."



"...Since our first installation prior to the 2013 season, we have experienced a vast amount of success on our AstroTurf surface, the product & technology behind it continue to improve... we are confident that AstroTurf & their team will continue to exceed our expectations."

"The AstroTurf team was great to work with throughout the design & installation. We are pleased with the aesthetics of the field design & playability of the Diamond Series surface. We are proud that our first class facility known for the best player amenities in our sport includes this premium playing surface."



"The AstroTurf field looks and plays like a natural surface. For me, it comes down to durability and playability. The surface excels at both. We've been on our field for 5+ years and it looks and performs like it did in year one."

"These guys have nailed it! The Science! The Turf! The Infill! Everything!"

"When it comes to AstroTurf, one of the biggest things in Banana Ball, is to have a game with non-stop trick plays, action, the speed of the game, and to be able to have that [here] where we're going to perform some of the greatest trick plays in the history of Banana Ball because of the turf."

"This is going to catapult us back into the competitive conversation of recruiting MVC Players & being able to get that Top 100 type of player. This new AstroTurf Diamond Series field is truly a game changer for our program."





OFFICIAL SYNTHETIC TURF PARTNER

MAJOR LEAGUE BASEBALL



From home fields to training facilities, AstroTurf works with many of the League teams to create tailored fields that suit each team's style of play. The Majors choose us for our customization, durability, improved player safety and consistent performance.

Atlanta Braves

Houston Astros

Pittsburgh Pirates

Baltimore Orioles

Kansas City Royals

Texas Rangers

Boston Red Sox

Los Angeles Angels

Toronto Blue Jays

Detroit Tigers

Philadelphia Phillies

Washington Nationals



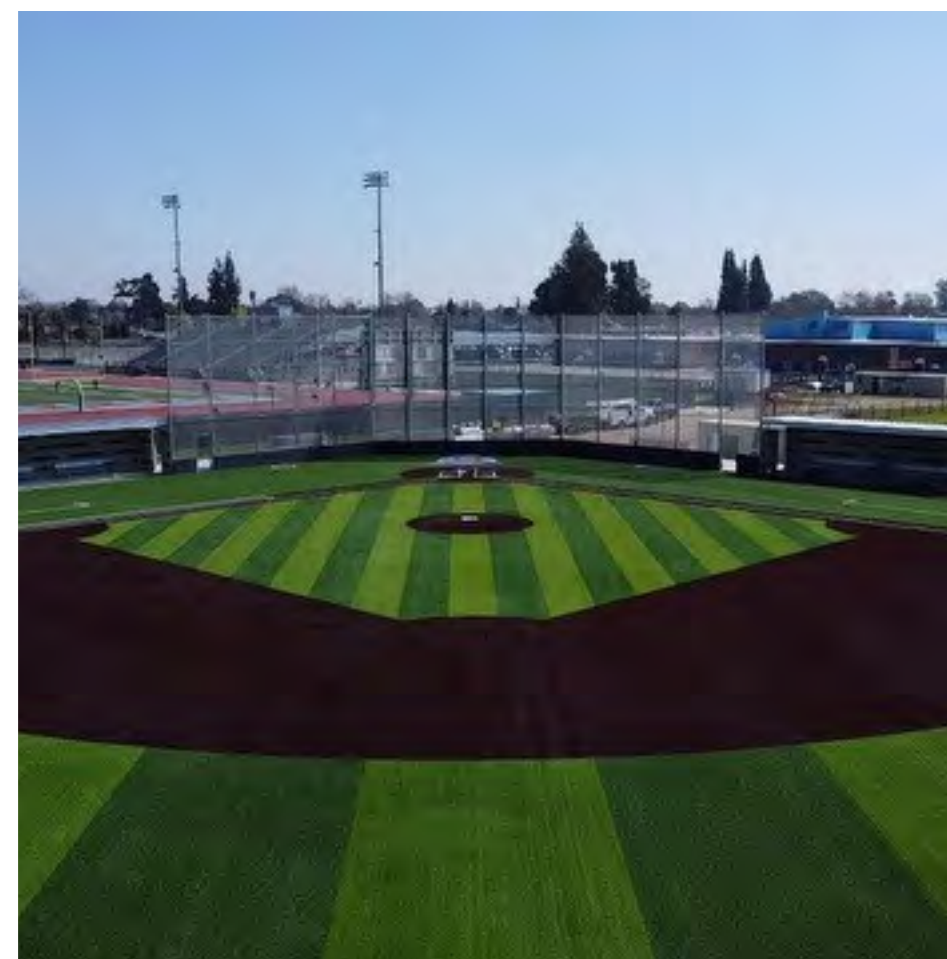
AstroTurf®

**SPEEDWAY
CLASSIC '25**
BRISTOL, TN
Presented by
BUILDSUBMARINES.COM





ASTROTURF IS THE #1 BASEBALL BRAND FOR



HIGH SCHOOLS NATIONWIDE

As younger players grow their skills, they benefit greatly from playing on a better surface.

The Diamond Series allows them to play on the same surface as pro teams and Division 1 colleges during this critical stage of their skills development.

The lower maintenance nature of a synthetic field also means young players are typically playing on better kept fields reducing risk of injury from uneven ground.





DIVISION 1 PROGRAMS

Since 2008, more NCAA 1 Baseball Programs choose AstroTurf Diamond Series than any other artificial turf.





BUILT FOR PERFORMANCE

MADE FOR FUN

AstroTurf's heritage in the game extends far beyond the professional level.

From local little leagues to top-tier NCAA Division 1 programs, AstroTurf has supported the grassroots of the game through communities and collegiate play.

Every day, thousands of athletes play on AstroTurf fields from young kids just learning to play baseball, to high school elite athletes enhancing the game for coaches, fans, and players at all levels.

12
WORLD
SERIES

9
WORLD
CHAMPIONSHIPS

8
MAJOR LEAGUE
ALL-STAR GAMES



**OFFICIAL SYNTHETIC TURF OF
THE SAVANNAH BANANAS**

GET

MORE LIFE OUT OF YOUR FIELD

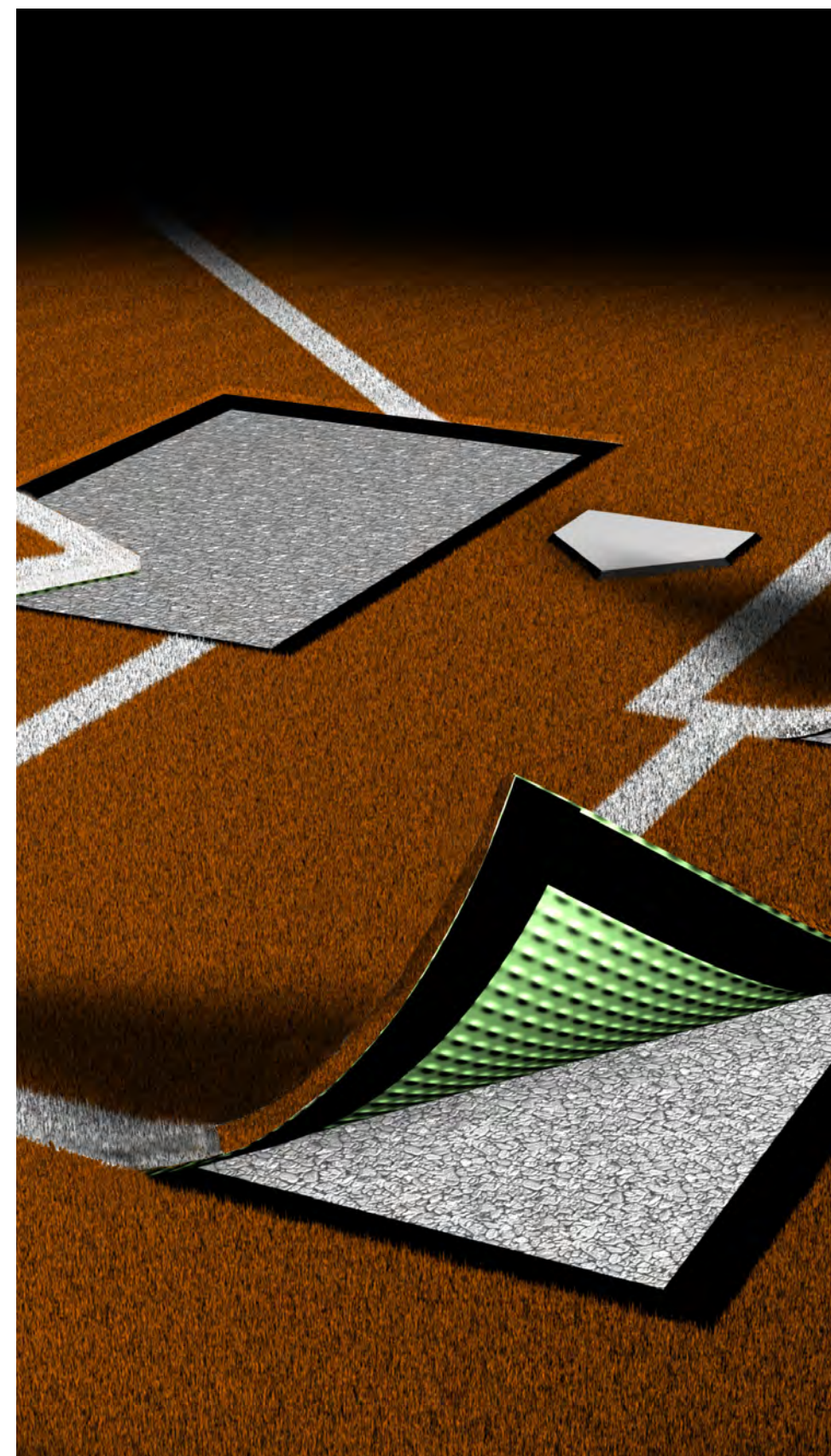
Synthetic turfs require less maintenance than natural grass, but they are not maintenance free.

To keep your field performing at the highest level, routine care & maintenance must be followed.

We encourage our customers to visit the maintenance page of our website and watch this comprehensive video on simple steps you can take to help care for your field. [astroturf.com/maintenance](https://www.astroturf.com/maintenance)

ASTROTURF OFFERS TWO TURF CARE PACKAGES - RHINO CARE AND RHINO PRO.

Scan this QR code to book a care package consultation today.



EXPERT INSTALLATION, REPAIR & MAINTENANCE

AstroTurf has the world's largest network of professional baseball field installers and offers cost-effective cleaning, maintenance and repair solutions to keep your synthetic field looking and playing at its best.



CHAMPION TEAM



AstroTurf
DIAMOND SERIES

Proud Partner
of MLB®

Laykold

Chosen by the
US Open

Rekortan

Chosen by 25% of
World Athletics Certified
Tracks

*liga*TURF

Chosen for
FIFA Headquarters, Zurich

POLIGRAS

Chosen for
9 Olympic Games

ROOTZONE

5 Star Systems for
Your 5 Star Athletes

AstroTurf | 

ASTROTURF FORMS PART OF THE FAMILY OF COMPANIES OWNED BY SPORTS SURFACING GIANT, SPORT GROUP.

With manufacturing facilities on three continents and active in over 70 countries, Sport Group has installed more than 13,000 artificial turf fields and 16,000 running tracks.

Sport Group was created by selective acquisitions of the leading turf, track, indoor and outdoor sports surface manufacturers. As a member of Sport Group, AstroTurf is in the enviable position of enjoying a completely vertical and fully integrated environment, where all of its ideas can be brought to life in a market hungry for innovation.

™/© 2026 MLB

1 (800) 723-8873

help@astroturf.com | astroturf.com

AstroTurf®