

# AstroTurf®

THE FIRST NAME IN TURF

## GET IN THE

# ROOTZONE

CONSISTENT, UNIFORM, RESISTANT FIBER MATRIX

[astroturf.com](http://astroturf.com)



# GET IN THE ROOTZONE

## IT'S SCIENCE ...AND AN ART.

AstroTurf's RootZone® is a layer of texturized fiber that curls down to roughly the height of the infill. The crimped fibers form a net-like matrix that encapsulates the infill and holds it in place, reducing infill splash and migration. Infill stability provides:

- **More consistent footing**
- **Enhanced cleat release**
- **More uniform shock absorption**
- **Better field resistance to wear**

AstroTurf® invented the first RootZone® back in 1998. It involved texturizing a fiber to form it into a shape and giving it a memory to maintain that shape throughout its life.

## THE PROCESS IS MORE COMPLICATED THAN IT SOUNDS.

Each individual batch of RootZone® fiber is run through a series of proprietary texturizing processes. However, texturizing it is dependent upon a number of other factors. These include managing the delicate balance of temperature, humidity, pressure and time.



# THE ART OF THATCH

Optimal texturization is vital, ensuring that the fibers draw down to the exact height. If the RootZone fibers are too tight, it's difficult to get the infill in, and if the RootZone fibers are too loose, they won't do their job of holding the infill in place!) During and after each process, the individual fiber batches are carefully measured.

This individual measurement determines which batch becomes a fiber used for pets or landscape, tennis or field hockey, or many other turf manufacturing programs.

No other manufacturer follows this process. And although many claim to have "thatch" type products that they introduced to follow our lead, they aren't even close. AstroTurf has manufactured and installed more than 300,000,000 square feet of RootZone athletic fields over the last decade. No one else has this level of experience with RootZone.

**ASTROTURF EXPERTS ARE ARTISTS IN BRINGING THEIR DECADES OF EXPERIENCE AND MILLIONS OF SQUARE FEET TO PLAY IN SELECTING ONLY THE 'PERFECT BATCH' OF TEXTURIZED FIBER FOR USE IN ROOTZONE TURF SYSTEMS.**

## ABOUT ASTROTURF® CORPORATION

AstroTurf® Corporation is the original inventor and innovator of synthetic sports surfacing, leading the industry for 60 years. Known for pioneering surfacing solutions, AstroTurf® Corporation delivers cutting-edge products focused on performance, safety, and sustainability.

The company's portfolio includes AstroTurf® fields, the trusted name in synthetic turf; Rekortan® tracks, the benchmark for elite running surfaces; Laykald® courts, the premier choice for tennis and multi-sport court play; and SYN Lawn®, the industry leader in residential and commercial landscaping solutions. These products are the original brands in their respective categories and set the standard for quality and innovation in sports and recreational surfacing.

AstroTurf® is dedicated to creating world-class sports and recreational environments that inspire athletes and elevate communities. For more information, visit [astroturf.com](http://astroturf.com).

## ABOUT SPORT GROUP

Sport Group is a leading designer, manufacturer and installer of artificial surfaces serving the global sports flooring, leisure and landscaping and industrial markets to over 70 countries globally. Headquartered in Burgheim, Germany, the company's brand portfolio includes AstroTurf® (the iconic brand that invented the industry), Polytan®, SYN Lawn®, LigaTurf®, Paligras®, Rekortan®, and Laykald®.

Sport Group is an industry leader in green technologies, pioneering sustainable products and services such as the world's first carbon neutral soccer turf, the world's first carbon zero field hockey turf and development of the industry's first, and only, turf recycling facility capable of recycling EPDM rubber.

The company has approximately 2,400 employees and operates nine vertically integrated manufacturing facilities and 31 distribution centers across the Americas, EMEA and Asia-Pacific regions. For additional information about Sport Group, please visit [sportgroup-holding.com](http://sportgroup-holding.com).

Major League Baseball trademarks and copyrights are used with permission of Major League Baseball. Visit [MLB.com](http://MLB.com).

**sportgroup**  
THE SURFACE SPECIALISTS



# GET YOUR **MONEY'S WORTH**

**Artificial turf fields are expensive. No doubt about it. So make sure you get your money's worth.**

Fiber is the most expensive part of any field. Infill materials like sand and rubber are the least expensive parts of your field. It's the fiber that's the beef in your burger.

Although many claim that heavy infill systems are better, they are simply less expensive to produce. Studies have not proven them to be any safer or better. In fact some studies show the opposite.

The cost in producing a heavy infill system is significantly less than the cost of producing a high fiber system. If that is true, why are you paying the same or higher for it than a better engineered, more durable system?

Profit is profit, but maybe the competition should think more about their customers than about their bottom line.

**Get the product that you're paying for, not just the marketing spin.**



## WHY PAY A LOT ...IF YOU'RE ONLY GETTING A LITTLE?



### COMMODITY - HEAVY INFILL SYSTEM 2"



Polyethylene  
36 oz per sq yd



Cryogenic Rubber  
2.6 lbs per sq ft



Sand  
3.65 lbs per sq ft



### ASTROTURF - 3D ROOTZONE 2"



Polyethylene  
42.6 oz per sq yd



Nylon  
17.4 oz per sq yd



Ambient Rubber  
2.35 lbs per sq ft



Sand  
2.35 lbs per sq ft

**If fiber is the most expensive component in a synthetic turf system, why are heavy infill systems sold at the same price, or even higher, than AstroTurf?**

# KEEP YOUR INFILL WHERE IT'S SUPPOSED TO BE

Our RootZone is like a powerful turf web, that entangles the infill and keeps it where it's supposed to be. It reduces splash during play and more infill stays in place than conventional systems. ASTM testing proves that wherever infill moves there is a big difference in GMAX.

RootZone is a unique enhancement to artificial turf. It improves player security by delivering more predictable footing and more uniform shock absorption and energy restitution than conventional turf systems provide.

## INFILL MIGRATION

With RootZone your infill stays in place to provide an "as built" system even long after your field is installed. That means everything when it comes to performance, safety, maintenance costs and long term durability.



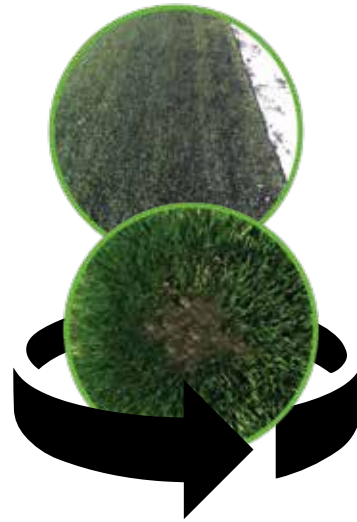
### LESS SPLASH - ASTROTURF

AstroTurf RootZone 3D - Lost 19.3% of starting infill



### SPIN TEST

A 1' x 1' sample is spun on its axis for one minute.



### MORE SPLASH - COMPETITION

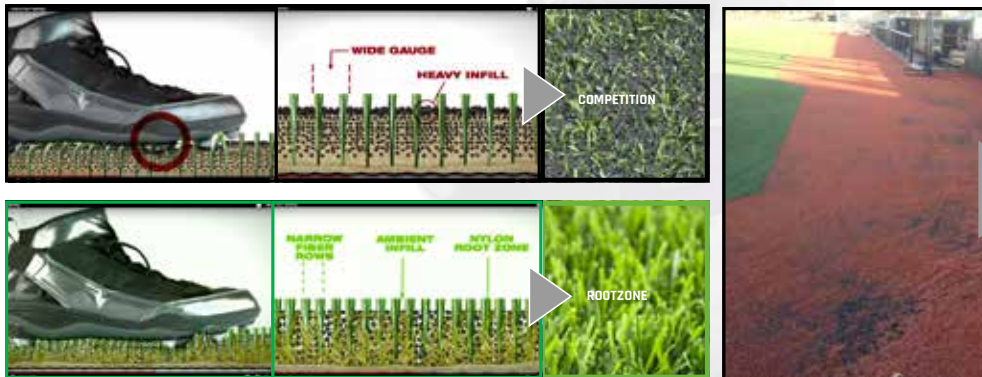
Lost 75.4% of starting infill



# IMPROVE **PLAYER SAFETY**



An independently funded study by Michigan State found that the RootZone significantly reduced torque transmitted to knees and ankles, at levels similar to natural grass. Conversely, an independent study by the NFL showed that heavy weight infill systems yielded 67% more ACL injuries and 31% more high ankle sprains than natural grass.



Conventional infilled turf fields exhibit constant infill migration which leaves empty holes, divots, and dangerous spots if not carefully maintained.

As a result, in those high use areas, players are left with less shock absorption to prevent concussions and other injuries.

# GET MORE LIFE OUT OF YOUR FIELD

**Over time, conventional polyethylene fibers will lay over and break down from harmful UV rays. It's a fact of life. But not with a RootZone system.**

It has more fiber to begin with. Lots more. Plus the RootZone includes a nylon material made exclusively by AstroTurf. It is 10 times more durable than polyethylene fibers. Because the nylon RootZone won't break down, even years later, your field will continue to look and play like just like it did when you installed it.

Conventional fields may survive their warranty, but they end up looking like a field of black rubber and play nothing like they did when new. It is in years 5-8 when RootZone really stands out from the crowd, providing a far more consistent playing surface and far better looking field.



# REDUCE MAINTENANCE COSTS

The benefits of RootZone are clear. Maintenance costs are reduced, field life is extended, and the surface looks better season after season.

Every infilled turf field requires maintenance. Most of the money budgeted for equipment and grooming of conventional infill turf fields is spent to replace infill that has migrated out of position.

With RootZone your infill stays put, and so do your maintenance crews.

Also, every time your crew is out brushing and grooming your field, they are actually wearing out the fibers. The more your infill moves, the more grooming you have to perform. That means more wear and tear on your fibers.

## ANALYSIS, QUOTES, STUDIES.

Proceedings of the Institution of Mechanical Engineers, Part P: Journal of Sports Engineering and Technology

**Institution of MECHANICAL ENGINEERS**

**The effects of various infills, fibre structures, and shoe designs on generating rotational traction on an artificial surface.**

- M R Villwock, E G Meyer, J W Powell, A J Fouty, R C Haut

"An artificial surface with a nylon root zone yielded significantly lower peak torques than similar fibre surfaces without a nylon root zone."

"The cryogenically processed SBR infill yielded significantly higher peak torques than the ambient ground SBR. The size of infill particles and the presence of a nylon root zone may influence the compactness of the infill layer."

"Injuries to the lower extremity are among the most frequent injuries for all levels of sports, and often account for more than 50% of reported injuries."

"A nylon root zone is a simulated thatch layer at the base of the tufted turf. The zone provides fibre support and reduces infill compaction."

"Monofilament polyethylene fibres in conjunction with a nylon root zone produced significantly lower peak torques than other fibre types."

"Peak torques were significantly affected by infill type. The differences in torque may be due to the fineness of the infill, which is determined by the manufacturing process. A finer particle, such as cryogenically processed SBR crumb infill may develop a relatively compacted structure of infill that leads to more cleat contact and greater rotational traction."

The American Journal of Sports Medicine

**The American Orthopaedic Society for Sports Medicine**

**An Analysis of Specific Lower Extremity Injury Rates on Grass and FieldTurf Playing Surfaces in National Football League Games**

Safety Panel Investigation performed at the National Football League Injury and Safety Panel, NFL, New York, New York.

- Elliott B. Hershman, MD\*, Robert Anderson, MD, John A. Bergfeld, MD, James P. Bradley, MD, Michael J. Coughlin, MD, Robert J. Johnson, MD, Kurt P. Spindler, MD, Edward Wojtys, MD, John W. Powell, PhD, ATC, for the National Football League Injury and Safety Panel.

"Specifically, the observed injury rates of ACL sprains and eversion ankle sprains on FieldTurf surfaces were 67% and 31% higher than on grass surfaces and were statistically significant."

Orthopedic Society for Sports Medicine

**In Motion**

**Orthopedic Society for Sports Medicine**

"More than 70% of ACL injuries occur without contact. Non-contact injuries happen during landing or a sharp cutting maneuver."

"Lower extremity injuries account for 50% of all sports injuries."

**MICHIGAN STATE**

**NFL CHARITIES**

**Michigan State Study - Funded by NFL Charities**

"If the rotational traction characteristics of natural grass are the gold standard upon which artificial surfaces should be compared... the artificial surface constructed with polyethylene fibres in conjunction with a nylon root zone and ambient ground SBR crumb infill generated a lower peak torque."



## FOOTBALL

- ★ Appalachian State
- ★ Arizona State University
- ★ Boston College
- ★ University of Buffalo
- ★ Central Michigan University
- ★ Charleston Southern University
- ★ University of North Carolina-Charlotte
- ★ Camping World Stadium
- ★ University of Delaware
- ★ Fresno State University
- ★ Florida A&M University
- ★ Kent State University
- ★ Liberty University
- ★ Marshall University
- ★ University of Memphis
- ★ Michigan State University
- ★ McNeese State University
- ★ Missouri University
- ★ Ohio University
- ★ University of Oklahoma
- ★ Purdue University
- ★ San Jose State University
- ★ Stephen F. Austin University
- ★ South Dakota State University
- ★ Sam Houston State University
- ★ University of Colorado
- ★ University of South Alabama
- ★ University of Tennessee
- ★ UCLA
- ★ University of Colorado
- ★ University of Washington
- ★ Washington State University



"We are incredibly excited to work with AstroTurf on this project to provide the premium competition and practice surface our football student-athletes deserve. The new field also presented the opportunity to re-design the playing surface to a more modern look while featuring the state outline to show our pride in being the flagship university for the state of South Dakota."

**Corey Jenkins - Deputy Athletic Director, University of South Dakota**

"We are thrilled with the new AstroTurf field in our indoor practice facility. The AstroTurf RootZone turf system offers our student-athletes a premier surface that enhances their training experience while prioritizing their safety. This investment demonstrates our dedication to supporting our teams with the best resources available."

**Amy Folan - Director of Athletics, Central Michigan University**

"We are extremely excited to provide a state-of-the-art surface for our student-athletes. Our new AstroTurf surface creates an edge in player safety, performance, and in recruiting. The ability to mitigate head, knee, and extremity injury while providing a fast, stable playing surface will enhance what is already the best stadium and game day experience in the country."

**Scott Wooster - Head Football Coach, Grand Valley State**

"This is an exciting time for Boston College, and we feel that our new facilities will propel our athletic program well into the next decade. It makes sense that we would enlist AstroTurf to help us realize this vision. The technology behind their RootZone products is unrivaled in the market, and over the course of our relationship with AstroTurf we've seen that their commitment to client satisfaction is second to none."

**Matt Conway - Associate Ad of Facilities & Operations, Boston College**

"This is an exciting time for Mizzou Football. The new AstroTurf field system will improve our practice sessions and help our Tigers perform at their best. We look forward to using it leading up to the season."

**Eli Drinkwitz - Head Football Coach, University of Missouri**

"The new AstroTurf playing surface gives us added flexibility, both with late-season games created by the expansion of College Football Playoff, and opportunities to host more non-football events at our stadium. The state of the art system provides the durability that is necessary for us to host games, concerts, and other events year round."

**Rick George - Athletic Director, University of Colorado**

## WHAT THEY'RE SAYING !

"Our program is beyond grateful to open Fall camp on our new AstroTurf field. This field is the largest classroom on campus and the lessons that we teach on the turf stretch way beyond football. We are working to develop and mentor champions for life, and we now have the best classroom to do so. A big thank you to AstroTurf and their entire team for helping to get this project completed for day one of Fall camp. God Bless and Go Knights!"

**Trent Figg - Head Coach, Calvin University**

"We are extremely excited to have AstroTurf provide our playing surface at Jerry Richardson Stadium. Through AstroTurf we are providing a high-level playing surface for our football team. On top of the great product for our student-athletes, we have been able to highlight our bold new brand in an attractive fashion that will capture attention across the country. Definitely gold standard!"

**Cass Ferguson - Assistant Athletic Director of Facilities & Events, University of North Carolina-Charlotte**

"We are excited to continue our relationship with AstroTurf with the installation of a new field at Husky Stadium. Our student athletes and staff have been thrilled with the performance, durability and aesthetics of our practice field. The new field will be a tremendous enhancement to The Greatest Setting in College Football."

**Dan Erickson - Associate Athletic Director, University of Washington**

"We are excited to have AstroTurf RootZone installed at Huskie Stadium. We have been very pleased with the AstroTurf surface installed over the past year at NIU Soccer Complex and in the infield of Ralh McKinzie Field at Walter and Janice Owens Park. The new surface helps us to ensure the safety and performance of the student-athletes and will enhance the appearance of Huskie Stadium both for our fans in the stands and those watching on TV."

**John Cheney - Deputy Athletic Director, Northern Illinois**

"The turf replacement will only add to many other stadium enhancements that will provide a first-class experience, while reducing injuries and improving the safety and well-being of our student-athletes."

**Greg Seitz - Athletic Director, Jacksonville State University**



Boston College - Chestnut Hill, MA



Appalachian State University - Boone, NC



University of Washington - Seattle, WA



California State University, Fresno - Fresno, CA



Rice University - Houston, TX



McNeese State University - Lake Charles, LA



University of North Carolina at Charlotte - Charlotte, NC



University of Missouri - Columbia, MO

# SOCCER

- ★ Boston College
- ★ Brigham Young University
- ★ Camping World Stadium
- ★ Central Michigan
- ★ Chicago Fire
- ★ Colorado Rapids
- ★ University of Delaware
- ★ Duke University
- ★ El Pomar Soccer Complex
- ★ Evergreen SportsPlex
- ★ Eugene Civic Par
- ★ ForeKicks Soccer Complex
- ★ Global Premier Soccer Complex
- ★ Highmark Stadium
- ★ LA Galaxy Dignity Park
- ★ Liberty University
- ★ Libertyville Soccer Complex
- ★ Lewis & Clark College
- ★ Los Positas College
- ★ Lynchburg College
- ★ Mercer University
- ★ Metro State University
- ★ Midwestern State University
- ★ Monterey Bay FC
- ★ Princeton University
- ★ Queens University
- ★ UC Riverside
- ★ University of Pittsburgh
- ★ Stanford University
- ★ Starfire Sports Complex
- ★ South Dakota State University
- ★ Viera Soccer Park
- ★ Virginia Youth Soccer Association
- ★ West Texas A&M University

## WHAT THEY'RE SAYING !

"The LA Galaxy are thrilled to collaborate and partner with AstroTurf. As a leader in the sports surface technology space, their commitment to quality, innovation, and sustainability mirrors many of the LA Galaxy's values as we work to advance the sport of soccer."

**Tom Braun - President of Business Operations & CEO) LA Galaxy**

"The AstroTurf Field is really good even compared to grass. You feel like it's very natural; you can move the ball and receive the ball on the ground at speed. Normally on some turf fields you feel like it's hard on your body, but on this field, but on the field, things feel smooth and you feel good. You don't have to spend as much time with recovery because it hasn't been as tough on your body."

**Georgi Minoungou - Midfielder, Seattle Sounders FC**

"Playing on AstroTurf in training makes an easier transition to grass on game days than other turf fields. It's a lot more grass-like in the way the ball moves. With some turf, you see a little bounce here or there, but this turf is plusher; the ball bounces more realistically and the turf itself cushions more like real grass does. It's also definitely easier on your legs in terms of the pounding on the knees and joints, and you can get great traction without your feet getting stuck."

**Gio Migletti - Attacker, Tacoma Defiance**

"While artificial turf will never be the same as grass, AstroTurf gets closer to performing and feeling like real grass than other turf fields I have played and coached on. The ball moves smoothly with no bounce, which is good. When watered, it glides on AstroTurf."

**Herve Diese - Head Coach, Tacoma Defiance**

"The best performance requires the best training. That's why we trust AstroTurf. AstroTurf delivers unparalleled ability, safety, and playability, ensuring every match and session of training is fast and exciting. As a proud partner of the LA Galaxy, AstroTurf continues to provide world-class surfaces fueling the future of the game."

**Maurico Cuevos - Defender, LA Galaxy**

"AstroTurf did a beautiful job returfing our field. Their product met all of our needs as a soccer club, a county park, and an NCAA Division I Men's and Women's Soccer program. In addition to being competitive on price, AstroTurf's technology of incorporating an additional thatch layer of fiber to add density and help reduce filler "splash" made sense. The result is a soccer playing surface that best resembles plush natural grass. Everyone involved from AstroTurf has been a pleasure to work with. Installing an artificial surface is a big investment, and we feel really good about AstroTurf's commitment to maintaining and servicing our new field for the next 10-15 years or more."

**Rick Suyao - Executive Director, High Country Soccer**

"AstroTurf's innovative products and top of the line resources provide the performance and quality that is needed for our Academy and Juniors to train on the best surface available."

**Paul Cadwell - Chicago Fire FC Senior Vice President of Community Programs, Engagement and Facilities**

"Our AstroTurf field is the best soccer field in the country!"

**Jay Vidovich - University of Pittsburgh Soccer**

"The decision to go with AstroTurf was unanimous. We felt that the quality of their RootZone product, the technology behind it, and the experience of their team were unrivaled among synthetic turf companies."

**Mike Werner - Mayor of Gatlinburg, TN (Home of Rocky Top Sports World)**





Chicago Fire Pitch - Chicago, IL



Highmark Stadium - Pittsburgh, PA



Los Positas College - Livermore, CA



Monterey Bay FC - Seaside, CA



Princeton University - Princeton, NJ



University of Pittsburgh - Pittsburgh, PA



UC Riverside - Riverside, CA



Camping World Stadium - Orlando, FL

# BASEBALL & SOFTBALL

## WHAT THEY'RE SAYING!

- ★ Abilene Christian University
- ★ Appalachian State University
- ★ Boston College
- ★ University of Connecticut
- ★ Dallas Baptist University
- ★ Campbell University
- ★ University of Delaware
- ★ Duke University
- ★ Eastern Michigan
- ★ University of Evansville
- ★ University of Incarnate Word
- ★ University of Iowa
- ★ Jacksonville State University
- ★ University of Kentucky
- ★ Liberty University
- ★ University of Michigan
- ★ University of Missouri
- ★ Northwestern University
- ★ University of Oklahoma
- ★ Oklahoma State University
- ★ Oral Roberts University
- ★ University of Pittsburgh
- ★ University of Portland
- ★ University of Richmond
- ★ Sam Houston State University
- ★ Seattle University
- ★ Slippery Rock University
- ★ Southern Illinois University
- ★ Southeastern Louisiana University
- ★ St Johns University
- ★ St Josephs University
- ★ Ohio State
- ★ Toronto Blue Jays
- ★ Vanderbilt University
- ★ Valparasio University
- ★ Virginia Tech University
- ★ Washington State University
- ★ University of Washington
- ★ University of Georgia
- ★ Marshall University
- ★ University of North Carolina Wilmaker
- ★ East Tennessee State University
- ★ Gonzaga University
- ★ Savannah Bananas
- ★ University of Georgia
- ★ Marshall University
- ★ University of North Carolina Wilmington
- ★ East Tennessee State University
- ★ Gonzaga University
- ★ Savannah Bananas

"AstroTurf's cutting-edge technology will assist in our preparation of championship caliber play for the Atlanta Braves organization."

**Michael Dunn - Atlanta Braves VP of Florida Operations, Atlanta Braves Cool Today Park**

"Our partners at AstroTurf heard our plan, embraced it, and then help us find solutions to make it happen. No site is perfect, and you have to have support on a willingness to change and on the fly make it work. This is what AstroTurf did for us. Every step along the way, we had a partner, and that is what it is all about."

**Christian Spears - Marshall U AD, Marshall University**

"AstroTurf did a fantatic job with the install of the our new turf. Everyone involved with the project was great to work with from start to finish. The new turf has played great from day one and will only get better. We have been on it everyday for a month and our players love it."

**Rick Heller - Head Baseball Coach, University of Iowa**

"We are thrilled with our AstroTurf playing surface at L. Dale Mitchell Park. The AstroTurf and Brock padding system give our players one of the highest performing and safest playing surfaces in the country. And the experience we had with United Turf and Track was first class. United Turf and Track made the replacement of our field seamless. Their vast knowledge, experience and professional approach made this project very easy to complete."

**Skip Johnson - Head Coach, University of Oklahoma**

"When we were choosing our synthetic surfaces at Obrate Stadium on the high traffic warning track and in our player development areas, we knew we wanted to have the best artificial surface that our players can compete and practice on. Several D1 Baseball stadiums are surfaced and played on synthetic turf and to prepare our players on the best, we chose AstroTurf. AstroTurf gives us the durability, flexibility and playability to train at a high level every day."

**Josh Holliday - Head Coach, Oklahoma State**

"Moving to turf was not an easy decision for us and came with a great deal of research. We wanted a surface that would bring harmony to both the offensive and defensive components of the game. AstroTurf's product allowed us the best opportunity to do this without compromising any aspect of our field."

**Tim Corbin - Head Coach, Vanderbilt University**

"It's hard to put into words what this is going to for our program and the school recruiting wise. This field is as good or better than any D1 school's field out there. Without question, no hesitation at all, it is the premier DII facility in the country. AstroTurf did an outstanding job for us."

**Jeff Messer - Head Coach, Slippery Rock University**

"The collaboration, the effort, the technology and the data that they give you, with the rubber and sand infill, the compaction of it - these guys have nailed it. The have nailed the technology, they have nailed the fibers and infill that we are using, but they have nailed the science of baseball."

**Mike Bell - Head Coach, University of Pittsburgh**

"We are thrilled with the outcome of our new AstroTurf Diamond Series playing surface. From the playing field to the logo, the attention to detail is top-shelf stuff. The colors are vibrant, the lines are crisp and the look and playability of the field will be second-to-none in college baseball."

**Kermit Smith - Head Coach, Appalachian State University**

"I think AstroTurf is an absolute necessity in the Midwest. We love the playability and speed of the Diamond Series surface we have at Michigan. I think if you're re-doing your playing surface, the way our climate is, dealing with AstroTurf is the answer."

**Erik Bakich - Head Coach, University of Michigan**

### SOFTBALL

- ★ Auburn University
- ★ Boston College
- ★ Campbell University
- ★ University of Connecticut
- ★ Fresno State University
- ★ University of Delaware
- ★ University of Evansville
- ★ University of Georgia
- ★ University of Iowa
- ★ Jacksonville State University
- ★ James Madison University
- ★ Liberty University
- ★ Marshall University
- ★ University of Michigan
- ★ University of Minnesota
- ★ University of Missouri
- ★ Northwestern University
- ★ University of Oklahoma
- ★ Oklahoma State University
- ★ Ohio State University
- ★ University of Oregon
- ★ University of Pittsburgh
- ★ Texas Tech University
- ★ University of Washington

"Our AstroTurf outfield is a high-performing surface that is easy to maintain and is loved by our coaches and athletes. Our beloved panther logo really pops on this field."

**Jenny Allard - Head Coach, University of Pittsburgh**

"Competing at the highest level in the Big 12 means we need every possible advantage. Our AstroTurf installation at Cowgirl Stadium has elevated our entire operation. The consistency and durability it provides allow us to practice and play with fewer weather cancellations and less maintenance, giving our student-athletes the reliable, elite-level surface they deserve. It's not just about aesthetics—it's about creating a competitive environment that reflects the caliber of our program every single day."

**Kenny Gajewski - Head Coach, Oklahoma State**

**AstroTurf.**



Proud Partner of Major League Baseball



University of Evansville - Evansville, IN



Vanderbilt University - Nashville, TN



Washington State University - Pullman, WA



Rogers Centre - Toronto, ON



Appalachian State University - Boone, NC



Boston College - Chestnut Hill, MA



University of Pittsburgh, Pittsburgh, PA



University of Connecticut, Storrs, CT



Auburn High School - Auburn, WA



Folsom Lake College Softball Field - Folsom, CA



Liberty University Softball Field - Lynchburg, VA



University of Connecticut Softball field - Storrs, CT

## MULTI-FIELD COMPLEXES

- ★ Athenia Park
- ★ Athletes In Action Complex
- ★ Collier County Regional Park
- ★ Cyclone Sports Park
- ★ DE Turf Kent County Sports Complex
- ★ Evergreen SportsPlex
- ★ ForeKicks Soccer Complex
- ★ Fountain Bluff
- ★ Global Premier Soccer
- ★ Grand Park
- ★ John B. Lewis Soccer Complex
- ★ Kansas City Royals Urban Youth Academy
- ★ Maryland SoccerPlex
- ★ Mecklenburg County Sports Complex
- ★ Montour Junction
- ★ Morgan Hill Sports Complex
- ★ Northeast Regional Park
- ★ Rocky Top Sports World
- ★ Sand Mountain Sports
- ★ Schaumburg Parks and Rec
- ★ Shipyard Baseball Park
- ★ Silverlakes Equestrian and SportsPlex
- ★ SOZO Sportsplex
- ★ Starfire Sports Complex
- ★ Total Sports Park
- ★ Ultimate Soccer Arenas
- ★ Union Point
- ★ United Sports Training Center
- ★ University Liggett School
- ★ USSSA Space Coast
- ★ Viera Regional Park
- ★ Virginia Beach Field Hockey Complex
- ★ Virginia Youth Soccer Association HQ
- ★ Wide World of Sports
- ★ Woodside Sports Complex
- ★ Boombah Sports complex
- ★ Paragon Star Sports Complex
- ★ Grimes Sports Complex
- ★ Ripken Experience
- ★ Bee Creek Sports Complex
- ★ Big League Dreams
- ★ Sand Mountain Park

## WHAT THEY'RE SAYING!

"By integrating AstroTurf's advanced products, we continue to propel WSU's sports infrastructure into the future. These revamped turf systems reinforce our ongoing commitment to providign a safe, top-tier environment that optimizes athletes' potential and reduces the risk of injuries."

**Shawn Deeds - WSU Sr AD, Events and Facility Operations, Washington State University**

"The damage caused by the flooding was overwhelming, and we feared the field might be lost for the season. But AstroTurf came through for us in a big way. The team they sent worked tirelessly to restore the field in time for our kids to play."

**Travis Putnam - Superintendent, Haywood County NC Pisgah High School**

"We strive for excellence in every aspect of the sports experience at Fore Kicks, and a cutting-edge AstroTurf synthetic turf system achieves that standard and then some."

**Tom Teager - President, Fore Kicks (MA)**

"In order to realize our vision, we knew our athletic fields had to be impeccable. After an exhaustive eight month review process, our Ownership at Evergreen chose Astro Turf. The technology and testimonials behind AstroTurf's next generation synthetic turf systems left no doubt in our minds."

**Chris Bourassa - Head of Operations, Evergreen Sportsplex (VA)**

"The Space Coast Complex gives us the ability to bring all of our athletes together in one place for training, games, and tournaments. It was imperative from day one that our complex needed to be multi-purpose and have the most advanced playing surface possible, and that's why AstroTurf's Diamond Series was the clear choice for us."

**Don DeDonatis - Chairman of the Board & CEO, USSSA (FL)**

"Aside from a superb end product, we've been impressed by how responsive the AstroTurf team has been. From the feasibility study to the turf installation, expert guidance was there at every stage. We constantly receive positive feedback on our playing surfaces from athletes, coaches, and tournament directors."

**Jamie Cox - General Manager, Panama City Beach Sports Complex**





Sand Mountain Sports Complex - Albertville, AL



USSSA Space Coast Sports Complex - Melbourne, FL



The Shipyard - Charleston, SC



Panama City Beach Sports Complex - Panama City Beach, FL



Rocky Top Sports Complex - Gatlinburg, TN



Fountain Bluff Sports Complex - Liberty, MO



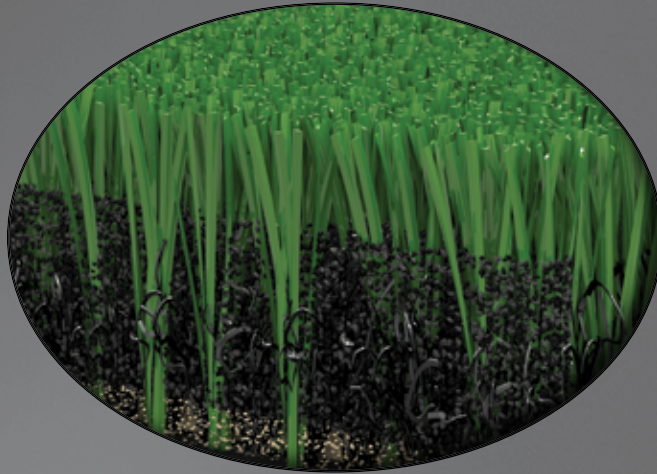
Ridgefield Recreation Complex - Ridgefield, WA



Cyclone Sports Park - Pecos, TX

**ROOTZONE**

**CONSISTENT, UNIFORM, RESISTANT FIBER MATRIX**



**AstroTurf.**

AstroTurf Corporation 2680 Abutment Rd, Dalton, GA 30721 (800) 723-TURF  
help@astroturf.com www.astroturf.com X@AstroTurfUSA